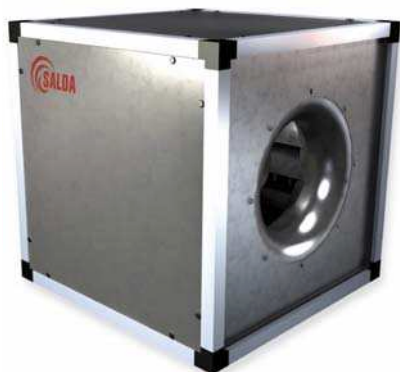


KUB



Acoustically insulated fans

Caissons de ventilation insonorisés

Schallisolierte kanalventilatoren

Канальные акустические вентиляторы



Acoustically insulated duct fans for ventilation and air conditioning systems. Used for the air supply or extract. Additional insulation of the fan box reduces noise level to the surroundings. Not suitable for polluted air, aggressive and explosive gases.

Impeller: backward curved wings.

Motor: external rotor, direct transmission, long-serving bearing with no maintenance requirements.

Housing: made of galvanized steel, housing frame made of aluminium profiles, perforated sheet, which reduces noise level in duct systems.

Sound insulation: stone wool, 25 mm thickness.

Low noise level.



Schallisolierte kanalventilatoren, die für Lüftungs- und Klimaanlage bestimmt sind, werden an Luftführungs Kanäle angeschlossen. Sie werden für Zuluft und - Abluft verwendet. Nicht geeignet für die Beförderung von verschmutzter Luft, aggressiven, explosiven Gasen.

Lauftrad ist rückwärts gekrümmt, aus verzinktem Stahl.

Der Motor: Außenrotor, integrierter Thermokontakt-Motorschutz, dauerhafte, keine Pflege erfordernde Lager.

Das Gehäuse: aus verzinktem Blech, Gehäuserahmen aus Aluminiumprofil.

Schallisolation: Steinwolle mit verstärkter Oberfläche, 25mm dick, nicht entzündbar.

Niedriges Geräuschniveau.



Les caissons de ventilation pour gaines destinés aux systèmes de ventilation et de climatisation. Ils s'utilisent en apport d'air neuf ou en extraction. Ces caissons ne conviennent pas au transport d'air fortement pollué, de gaz agressifs ou explosifs.

Turbine : pales incurvées vers l'arrière.

Moteur : à rotor externe, entraînement direct avec protection thermique intégrée (PTO), roulements graissés à vie ne nécessitant pas d'entretien.

Enveloppe : tôle d'acier galvanisée, cadre de l'enveloppe en profilé d'aluminium.

Isolation acoustique : laine de roche surface renforcée, 25 mm d'épaisseur.

Faible niveau de bruit.



Канальные акустические вентиляторы для систем вентиляции и кондиционирования, подключаются к воздуховодам. Эксплуатируются в целях подачи и вытяжки воздуха. Не используются при транспортировке загрязнённого воздуха, агрессивных, взрывоопасных газов.

Крыльчатка: загнутые назад лопасти, оцинкованная сталь.

Двигатель: наружный ротор, встроенные термодатчики двигателя, не требующие ухода подшипники с длительным сроком службы.

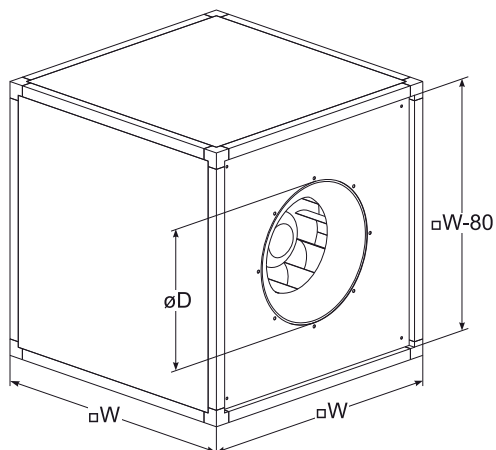
Корпус: оцинкованной жести, рама корпуса из алюминиевого профиля.

Звукоизоляция: минеральная вата с усиленной поверхностью, толщиной 25 мм, негорючая.

Низкий уровень шума.

Accessories

Single phase speed controller	Three phase speed controller	Monophase speed controller	Flexible connection	Damper for rectangular ducts	Outdoor grilles
					
TGRV p. 84	TGRT p. 85	MTY p. 87	LJ/PG p. 97	SSK p. 150	LGd p. 160



Type	Dimensions [mm]		
	øD	Nominal diameter of impeller- ø _n	□ W
KUB 355	292	355	500
KUB 400	325	400	670
KUB 450	365	450	670
KUB 500	410	500	670
KUB 560	460	560	800
KUB 630	510	630	800
KUB 710	580	710	1000

Type	Accessories							
	TGRV	TGRT	MTY	LJ/PG	SSK	LGd	SSP	Main switch
KUB 355-4-L1	2	-	2,5	420x420	420x420	380xx380	460x460	BWS316 Y TPN
KUB 355-4-L3	-	1	-	420x420	420x420	380xx380	460x460	BWS316 Y TPN
KUB 400-4-L1	3	-	4	590x590	600x600	550x550	630x630	BWS316 Y TPN
KUB 400-4-L3	-	1	-	590x590	600x600	550x550	630x630	BWS316 Y TPN
KUB 450-4-L1	4	-	-	590x590	600x600	550x550	630x630	BWS316 Y TPN
KUB 450-4-L3	-	2	-	590x590	600x600	550x550	630x630	BWS316 Y TPN
KUB 450-6-L1	1,5	-	-	590x590	600x600	550x550	630x630	BWS316 Y TPN
KUB 450-6-L3	-	1	-	590x590	600x600	550x550	630x630	BWS316 Y TPN
KUB 500-4-L3	-	3	-	590x590	600x600	550x550	630x630	BWS316 Y TPN
KUB 500-6-L3	-	1	-	590x590	600x600	550x550	630x630	BWS316 Y TPN
KUB 560-4-L6	-	4	-	720x720	720x720	680x680	760x760	BWS316 Y TPN
KUB 560-6-L3	-	2	-	720x720	720x720	680x680	760x760	BWS316 Y TPN
KUB 630-4-L3	-	7	-	720x720	720x720	680x680	760x760	BWS316 Y TPN
KUB 630-6-L3	-	3	-	720x720	720x720	680x680	760x760	BWS316 Y TPN
KUB 630-8-L3	-	1	-	720x720	720x720	680x680	760x760	BWS316 Y TPN
KUB 710-6-L3	-	5	-	920x920	920x920	880x880	960x960	BWS316 Y TPN
KUB 710-8-L3	-	2	-	920x920	920x920	880x880	960x960	BWS316 Y TPN

Accessories

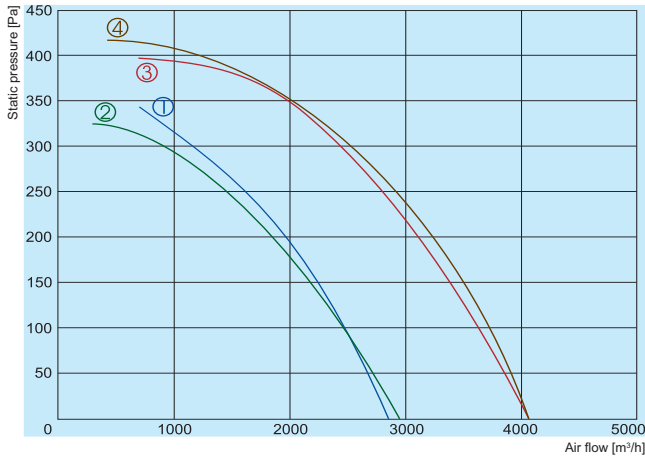
Rectangular duct silencer



Main switch

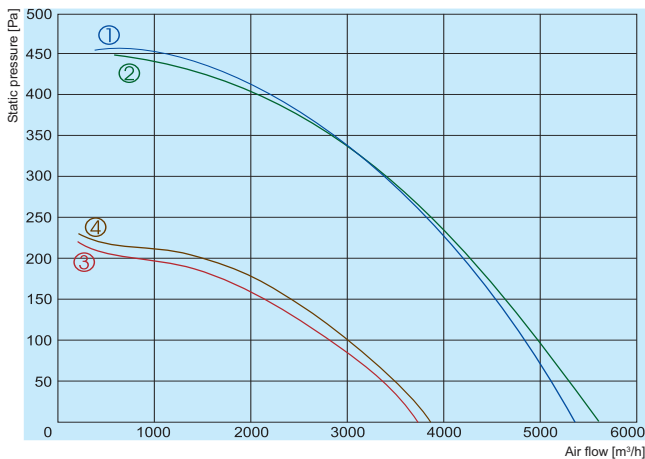


KUB



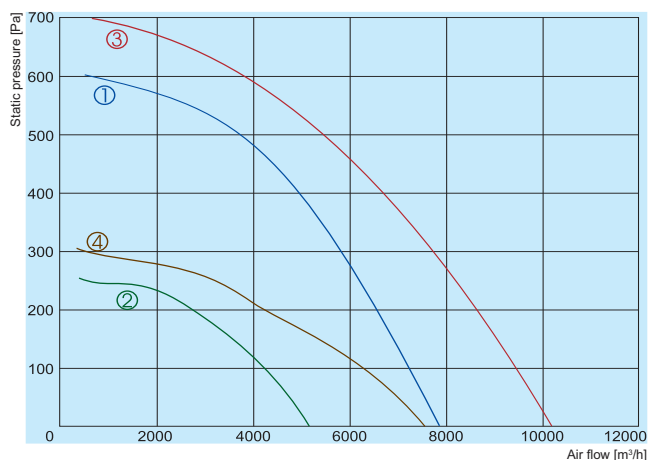
- ① — KUB 355-4-L1
- ② — KUB 355-4-L3
- ③ — KUB 400-4-L1
- ④ — KUB 400-4-L3

		355-4-L1	355-4-L3	400-4-L1	400-4-L3
Voltage/Frequency	[V/Hz]	230/50	400/50	230/50	400/50
Power consumption	[kW]	0,31	0,25	0,49	0,45
Current	[A]	1,45	0,47	2,20	0,86
Speed	[min ⁻¹]	1360	1330	1350	1340
Max. airflow	[m ³ /h]	2850	2950	4100	4100
Max. air temperature	[°C]	65	60	40	55
Total sound power level at 1 m	[dBA]	71	68	70	69
Weight	[kg]	37	37	57	57
Wiring diagram		Nr. 1	Nr. 2	Nr. 1	Nr. 2
Protection class:	motor	IP-54	IP-54	IP-54	IP-54
	terminal box	IP-55	IP-55	IP-55	IP-55



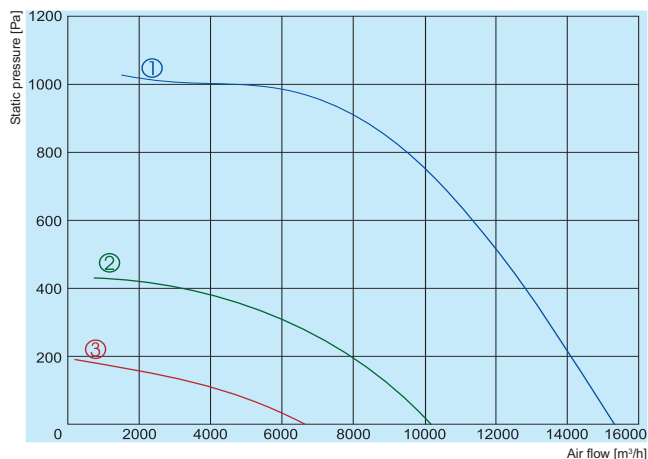
- ① — KUB 450-4-L1
- ② — KUB 450-4-L3
- ③ — KUB 450-6-L1
- ④ — KUB 450-6-L3

		450-4-L1	450-4-L3	450-6-L1	450-6-L3
Voltage/Frequency	[V/Hz]	230/50	400/50	230/50	400/50
Power consumption	[kW]	0,73	0,69	0,24	0,26
Current	[A]	3,30	1,30	1,05	0,63
Speed	[min ⁻¹]	1230	1220	840	870
Max. airflow	[m ³ /h]	5400	5600	3750	3800
Max. air temperature	[°C]	60	40	60	60
Total sound power level at 1 m	[dBA]	74	75	67	67
Weight	[kg]	60	60	60	60
Wiring diagram		Nr. 1	Nr. 2	Nr. 1	Nr. 2
Protection class:	motor	IP-54	IP-54	IP-54	IP-54
	terminal box	IP-55	IP-55	IP-55	IP-55



- ① — KUB 500-4-L3
- ② — KUB 500-6-L3
- ③ — KUB 560-4-L3
- ④ — KUB 560-6-L3

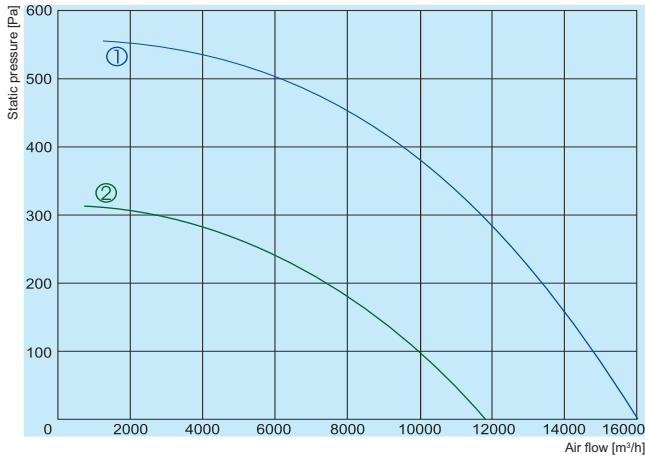
		500-4-L3	500-6-L3	560-4-L3	560-6-L3
Voltage/Frequency	[V/Hz]	400/50	400/50	400/50	400/50
Power consumption	[kW]	1,15	0,39	1,8	0,61
Current	[A]	2,10	0,81	3,40	1,05
Speed	[min ⁻¹]	1340	850	1230	830
Max. airflow	[m ³ /h]	7850	5150	10200	7550
Max. air temperature	[°C]	45	45	40	40
Total sound power level at 1 m	[dBA]	77	66	79	68
Weight	[kg]	70	66	117	110
Wiring diagram		Nr. 2	Nr. 2	Nr. 2	Nr. 2
Protection class:	motor	IP-54	IP-54	IP-54	IP-54
	terminal box	IP-55	IP-55	IP-55	IP-55



- ① — KUB 630-4-L3
- ② — KUB 630-6-L3
- ③ — KUB 630-8-L3

		630-4-L3	630-6-L3	630-8-L3
Voltage/Frequency	[V/Hz]	400/50	400/50	400/50
Power consumption	[kW]	4,0	1,05	0,38
Current	[A]	6,60	2,20	0,88
Speed	[min ⁻¹]	1360	870	530
Max. airflow	[m ³ /h]	15600	10600	6650
Max. air temperature	[°C]	40	70	60
Total sound power level at 1 m	[dBA]	82	74	77
Weight	[kg]	145	130	120
Wiring diagram		Nr. 2	Nr. 2	Nr. 2
Protection class:	motor	IP-54	IP-54	IP-54
	terminal box	IP-55	IP-55	IP-55

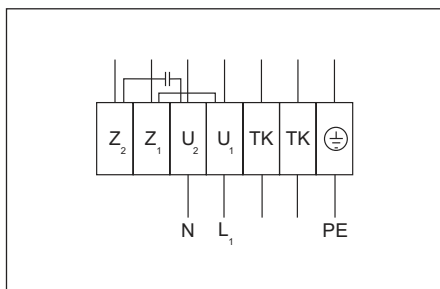
KUB



① KUB 710-6-L3

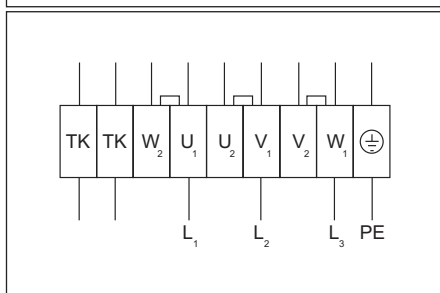
② KUB 710-8-L3

		710-6-L3	710-8-L3
Voltage/Frequency	[V/Hz]	400/50	400/50
Power consumption	[kW]	2,0	0,96
Current	[A]	3,90	1,90
Speed	[min ⁻¹]	890	650
Max. airflow	[m³/h]	16000	11900
Max. air temperature	[°C]	40	40
Total sound power level at 1 m	[dBA]	78	70
Weight	[kg]	185	170
Wiring diagram		Nr. 2	Nr. 2
Protection class:	motor	IP-54	IP-54
	terminal box	IP-55	IP-55



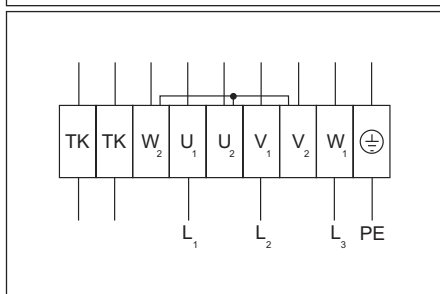
Wiring diagram No. 1 (1~230V)

- U₁ - brown
- U₂ - blue
- Z₁ - black
- Z₂ - orange
- TK - white
- PE - yellow-black



Wiring diagram No. 2 (Δ - 3~230V)

- U₁ - brown
- V₁ - blue
- W₁ - black
- U₂ - red
- V₂ - grey
- W₂ - orange
- TK - white
- PE - green-yellow



Wiring diagram No. 2 (Y - 3~400V)

- U₁ - brown
- V₁ - blue
- W₁ - black
- U₂ - red
- V₂ - grey
- W₂ - orange
- TK - white
- PE - green-yellow